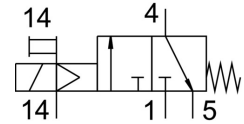
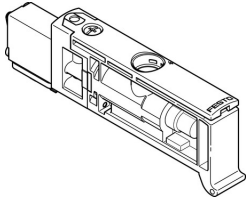


Air solenoid valve VUVB-ST12-M32C-MZD-QX-D-1T1

FESTO

Part number: 576002



Data sheet

Feature	Value
Valve function	3/2, closed, monostable
Actuation type	Electrical
Valve size	12 mm
Standard nominal flow rate	240 l/min ... 400 l/min
Pneumatic working port	QS-4 QS-6
Operating pressure	0.2 MPa ... 0.8 MPa
Operating pressure	2 bar ... 8 bar
Structural design	Poppet valve with return spring
Degree of protection	IP65
Nominal width	4 mm
Type code	VUVB
Exhaust air function	Without flow control option
Sealing principle	Soft
Mounting position	Any
Manual override	Detenting Non-detenting
Type of control	Pilot-controlled
Pilot air supply port	External
Flow direction	Non-reversible
Symbol	00992123
Information on operating pressure	0 - 8 bar with external pilot air 0 - 0.8 MPa with ext. pilot air
Pilot pressure MPa	0.2 MPa ... 0.8 MPa
Pilot pressure	2 bar ... 8 bar
Switching time off	14 ms
On switching time	6 ms
Duty cycle	100%
Max. positive test pulse with 0 signal	800 µs
Max. negative test pulse on 1 signal	300 µs
Coil characteristics	24 V DC: 1.0 W
Permissible voltage fluctuations	+/- 10 %
Operating medium	Compressed air as per ISO 8573-1:2010 [7:4:4]
Information on operating and pilot media	Operation with oil lubrication possible (required for further use)
Vibration resistance	Transport application test with severity level 1 as per FN 942017-4 and EN 60068-2-6
Shock resistance	Shock test with severity level 1 as per FN 942017-5 and EN 60068-2-27

Feature	Value
Corrosion resistance class (CRC)	0 - No corrosion stress
Temperature of medium	-5 °C ... 60 °C
Noise level	85 dB(A)
Ambient temperature	-5 °C ... 60 °C
Product weight	26.3 g
Electrical connection	Via sub-base
Type of mounting	On sub-base
Auxiliary pilot air port 14	Sub-base
Pneumatic connection 1	Sub-base
Pneumatic connection 3	Sub-base
Pneumatic connection 5	Sub-base
Note on materials	Free of copper and PTFE RoHS-compliant
Seals material	NBR TPE-U(PU)
Housing material	PA-reinforced
Piston slide material	Wrought aluminum alloy